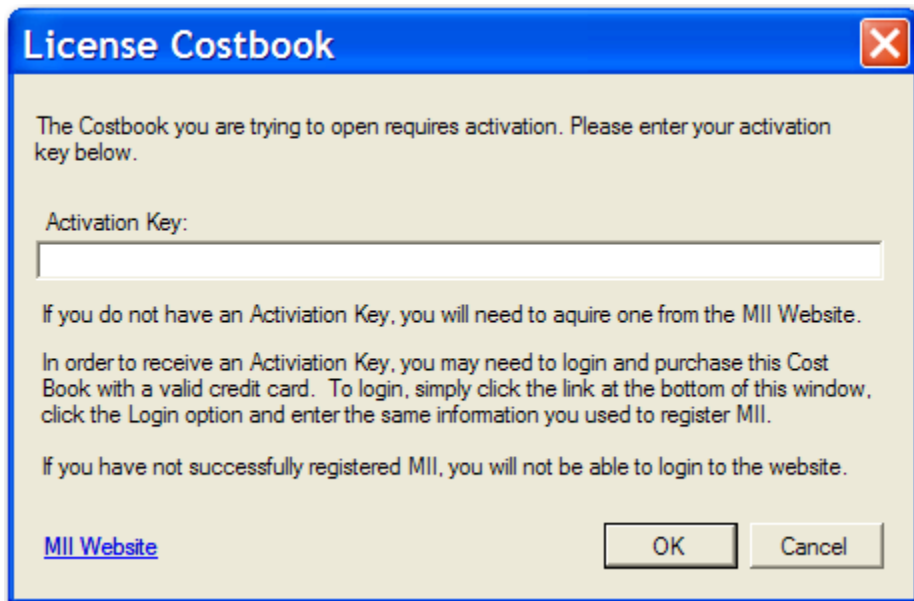


Activating the Cost Book Library

Once the registration of the software is complete, the user will need an activation key to use the Cost Book Library.

Entering a valid activation key below will allow the user access to the Cost Book Library. Select the hyperlink to the MII website to obtain an activation key.



The MII website is <http://www.miisoftware.com>



MII
Micro-computer Aided Cost Estimating System (MCACES)
Second Generation (MII)

Home Training Login

MII is the second generation of the Micro-Computer Aided Cost Estimating System (MCACES). It is a detail cost estimating program that was developed in conjunction with Project Time & Cost, Inc. (PT&C). MII is one of several modules of an integrated suite of cost engineering tools called Tri-Services Automated Cost Engineering System (TRACES). It interfaces with other PC based support modules and databases used by the Tri-Service Cost Engineering community.

MII provides an integrated cost estimating system (software and databases) that meets the U.S. Army Corps of Engineers (USACE) requirements for preparing cost estimates. Now being used by many of the USACE districts, it will soon be a requirement for all USACE districts to use MII, as well as all architect-engineering (A-E) firms performing design work for the USACE.

[Download MII Presentation](#)

Copyright 2007 Project Time & Cost, Inc.


Online Payment Processing

The user can select from three options: Home, Training or Login. The home page is displayed above.

The training page will display the information about the training courses offered.



Training Courses Offered

Project Time & Cost, Inc. (PT&C) is the exclusive provider of MII training. PT&C provides classroom-style training at their headquarters in Atlanta, Georgia, as well as, private on-site training. The current course offerings are as follows:

- MII Basic
- MII Advanced
- MII Refresher

MII Basic

Duration: 4 days [2010 Dates and Registration Form](#)

Description: This course provides cost engineering professionals with instruction in the preparation and execution of computerized cost estimates using the latest MII cost estimating software program. This course covers the basic computerized aspects of estimating using MII, the electronic Unit Price Cost Book and other supporting databases and tables (i.e. crew, equipment, assemblies, labor, etc.). The student is required to complete quantity takeoffs and prepare detailed cost estimates, which may require work to be done after regular class hours. A pretest and posttest will be given.

Objectives: At the end of the course, students will be able to:

- Navigate throughout the MII software and libraries
- Create a project, cost items, crews, labor and equipment
- Create assemblies Link items
- Define and apply markups
- Define and apply contractors
- Define a new report and change predefined reports

Included with the cost of the class, students are provided with one year of telephone support on MII, along with any updates that are released within that time frame.

MII Advanced

Duration: 4 days

Description: This course provides cost engineering professionals with advanced instructions on accessing and utilizing the components of the MII software program not provided in the basic course. The course provides instruction on the use of parametric worksheets and quantity linking (parametric modeling) for the development budget, as well as, detail cost estimates. This modeling approach and other estimating techniques are used to develop ENG Form 3086 estimates in the proper electronic format. Parameter worksheets, quantity linking, and assemblies are also applied to crew productivity analysis for the development of Civil Works (CW) estimates. The course explores estimate structures development and reporting to accommodate the CW Code of Accounts and the Military Programs and Environmental Work Breakdown Structures (WBS). Students will work with database functions to create site-specific unit prices, modify equipment costs for project specific circumstances, and adjust crew for overtime and shift differential.

Objective: At the end of the course students will be able to:

- Review all the aspect of the basic course
- Advanced reporting options
- Linking to folder/detail and Excel
- Assemblies
- Cost overrides
- Translate and reprice
- Modeling
- Importing
- Updating the cost book library

Included with the cost of the class, students are provided with one year of telephone support on MII, along with any updates that are released within that time frame.

MII Refresher

Duration: 2 Days

Description: This course is for cost engineers that have taken the basic course but need to brush up on the operation and functions of MII. The course is intended to make the user efficient in the operation of the software.

Objective:

- Review all the aspect of the basic course
- Advanced reporting options
- How to work more efficiently using MII

Copyright 2007 Project Time & Cost, Inc.



The login page will allow the user to log in to the site.

MII Micro-computer Aided Cost Estimating System (MCACES)
Second Generation (MII)

Home Training Login

Log In

Email:

Password:

[Forgot Password](#)

Copyright 2007 Project Time & Cost, Inc.

Authorize.Net
Click to MERCHANT
Online Payment Processing

After a successful login the user will have access to Product, My Account and Training.

MII Micro-computer Aided Cost Estimating System (MCACES)
Second Generation (MII)

Home Products My Account Training

MII is the second generation of the Micro-Computer Aided Cost Estimating System (MCACES). It is a detail cost estimating program that was developed in conjunction with Project Time & Cost, Inc. (PT&C). MII is one of several modules of an integrated suite of cost engineering tools called Tri-Services Automated Cost Engineering System (TRACES). It interfaces with other PC based support modules and databases used by the Tri-Service Cost Engineering community.

MII provides an integrated cost estimating system (software and databases) that meets the U.S. Army Corps of Engineers (USACE) requirements for preparing cost estimates. Now being used by many of the USACE districts, it will soon be a requirement for all USACE districts to use MII, as well as all architect-engineering (A-E) firms performing design work for the USACE.

[Download MII Presentation](#)

Copyright 2007 Project Time & Cost, Inc.

Authorize.Net
Click to MERCHANT
Online Payment Processing

The Products page will allow the user to purchase the Cost Book Library.

COST BOOK PURCHASING INFORMATION

To obtain the Current Cost Library, Contact RS Means at:

800-448-8182 – Select Option #2

Inform the agent you want to purchase the Current Cost book for MII

Please note the information on the Products page may change at any point in time and the information provided above is just a reference. Visit the actual site to obtain the most current and correct information.